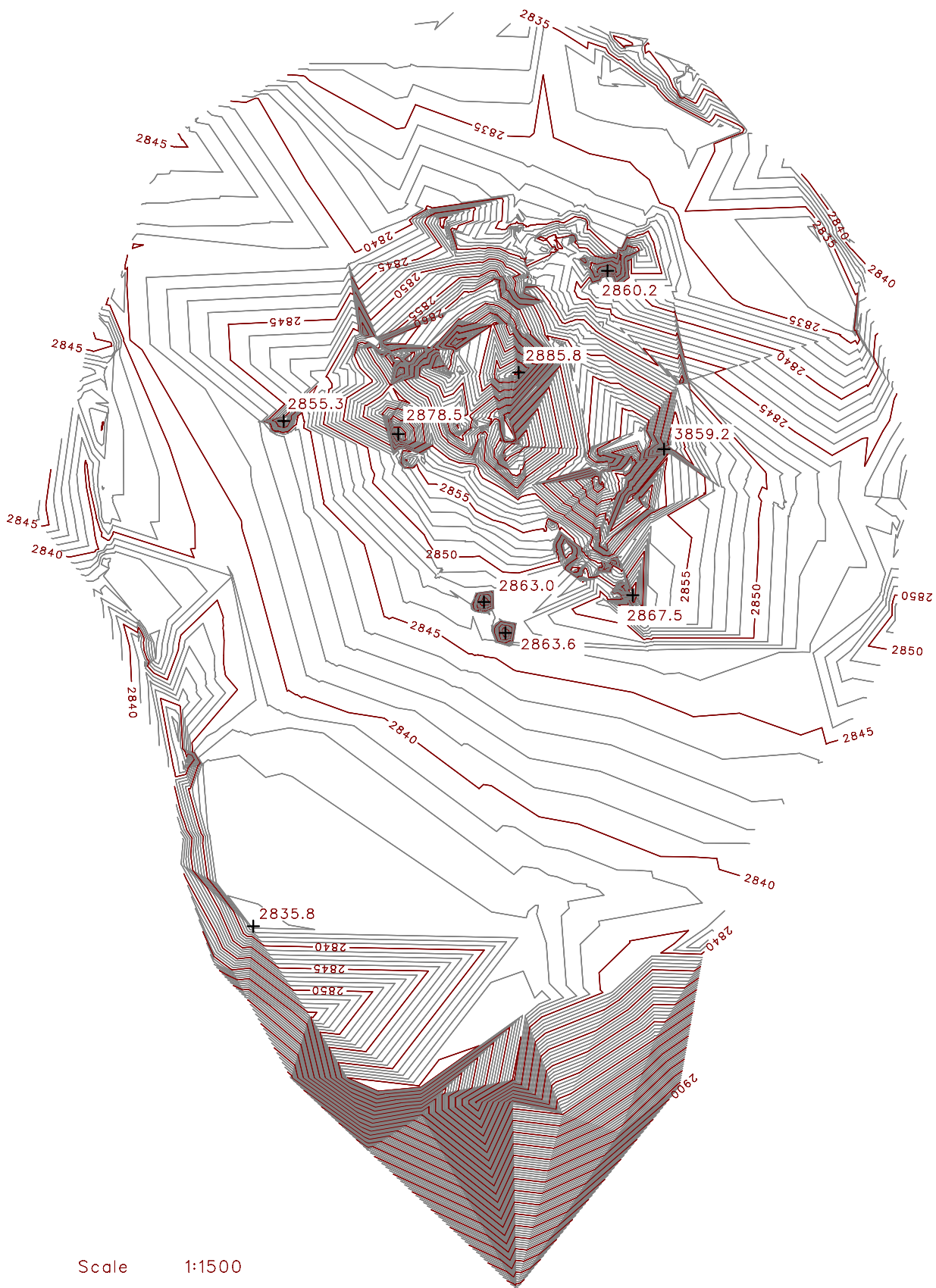


Ol Doinyo Lengai - The Mountain of God

Contour map of the crater and hornitos mapped using a Leica TPS1205 Reflectorless Total Station
Observations made between 28th July and 3rd August 2004 by members of a BSES Expedition



Scale 1:1500

Contour Interval:
Major Contour Interval = 5m
Minor Contour Interval = 1m

+ Lengai Summit
2951.6 metres